

Product datasheet

COLLAGEN XVII MOUSE MONOCLONAL ANTIBODY (NC16A-3)

SKU: MM-0065-P

250 µg

OVERVIEW

Clonality:

Monoclonal

Host:

Mouse

Reactivity:

Human

Application:

ELISA, WB, IHC, IF

Target:

Collagen XVII

Target background:

Collagen XVII is a member of the transmembrane collagen family of proteins. It is a major structural component of the hemidesmosome (HD) playing an important role in its integrity. HD is a specialized multiprotein complex involved in the attachment of basal keratinocytes to the underlying basement membrane.

Target alias:

Collagen alpha-1(XVII) chain, 180 kDa bullous pemphigoid antigen 2, Bullous pemphigoid antigen 2, COL17A1, BP180, BPAG2

Immunogen:

Purified recombinant NC16a-domain of collagen XVII

Specificity:

The antibody recognizes the NC16a domain (aa545-557)

Clone ID:

NC16a-3

Isotype:

IgG1

Preservative:

None

Format:

Lyophilized protein G purified in PBS pH7.4

Recommend starting dilution:

If reconstituted with deionized water in 250 µL: WB 1:1000; IHC-P: 1:40. Optimal dilution has to be determined by the user

Limitations:

Research Use Only

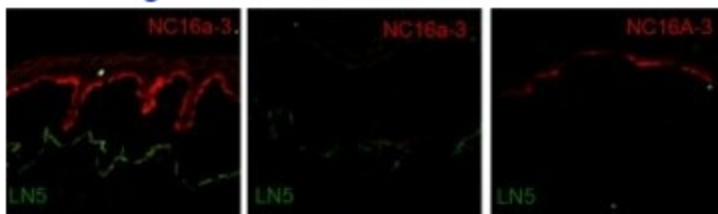
References:

- 1.-Hofmann SC - Plasmin plays a role in the in vitro generation of the linear IgA dermatosis antigen LADB97.
- 2.-Seppänen A - Distribution of collagen XVII in the human brain.
- 3.-Seppänen A - Expression of collagen XVII and ubiquitin-binding protein p62 in motor neuron disease.

Storage:

Lyophilized antibodies can be kept at 4°C for up to 3 months and should be kept at -20°C for long-term storage (2 years). To avoid freeze-thaw cycles, reconstituted antibodies should be aliquoted before freezing for long-term (1 year) storage (-80°C) or kept at 4°C for short-term usage (2 months). For maximum recovery of product, centrifuge the original vial prior to removing the cap. Further dilutions can be made with the assay buffer. After the maximum long-term storage period (2 years lyophilized or 1 year reconstituted) antibodies should be tested in your assay with a standard sample to verify if you have noticed any decrease in their efficacy.

Image:



Normal skin

Collagen XVII
-/- skin

Laminin 5
-/- skin

Cryosections of normal human skin and from patients with inherited skin-blistering disorders and absence of collagen XVII or laminin 5 were stained with mAb NC16a-3 and a rabbit anti-laminin 5 antibody.

E M

180kDa

120kDa



NC16a-3 detects collagen XVII and its 120kDa shed ectodomain by western blotting with keratinocyte extract (E) and keratinocyte medium (M) respectively

